

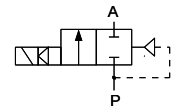
NO PRESSURE DIFFERENCE REQUIRED FOR VALVE OPERATION



TECHNICAL DATA:

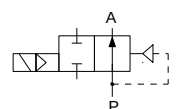
- **Internal parts:** stainless steel
- **Seals:** NBR, EPDM, FPM
- **Fluid temperature:** -10°C to +90°C (contact us for other ranges)
- **Ambient temperature:** max +55°C
- **Viscosity:** max 21 mm²/s
- **Response time:** opening 0.1 - 1 s; closing 0.5 - 5 s
- **Voltage:** 230, 115, 48, 24 V AC; 24, 12 V DC
- **Duty cycle:** continuous (ED100%)
- **Cycling rate:** 10 - 100 cpm
- **Electrical protection:** IP65 (with plug to ISO 4400)

Long term use in humid environment requires the use of sealing sets.



Closed when de-energised (NC)

| Ports | Orifice Size [mm] | Kv (water at 1 bar) [l/min] | Differential pressure [bar] | | Body material | Mass [kg] | Coil type | Model | Order code (click for details) | Fig. |
|-------|-------------------|-----------------------------|-----------------------------|-----|---------------|-----------|-----------|--------|--------------------------------|------|
| | | | min | max | | | | | | |
| G1/2 | 12 | 40 | 0 | 10 | Brass | 0.43 | TM30 | M2451 | 301702 | 1 |
| G3/4 | 18 | 65 | 0 | 10 | Brass | 0.8 | TM35 | M2521 | 301701 | 2 |
| | | 54 | 0 | 5 | PA | 0.5 | TM35 | M252PA | 301631 | 3 |
| G1 | 25 | 180 | 0 | 10 | Brass | 1.2 | TM35 | M2621 | 301709 | 4 |
| G6/4 | 40 | 330 | 0 | 1 | Brass | 2.75 | TM40 | M275 | 370811 | 5 |
| G2 | 50 | 630 | 0 | 1 | Brass | 5.9 | TM40 | M2621 | 391492 | - |



Open when de-energised (NO)

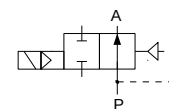
| Ports | Orifice Size [mm] | Kv (water at 1 bar) [l/min] | Differential pressure [bar] | | Body material | Mass [kg] | Coil type | Model | Order code (click for details) | Fig. |
|-------|-------------------|-----------------------------|-----------------------------|-----|---------------|-----------|-----------|---------|--------------------------------|------|
| | | | min | max | | | | | | |
| G1/2 | 10 | 40 | 0 | 1 | Brass | 0.43 | TM35 | M2451NO | 301690 | 1 |
| G3/4 | 18 | 65 | 0 | 1 | Brass | 0.76 | TM35 | M2521NO | 301685 | 2 |
| G1 | 25 | 180 | 0 | 1 | Brass | 1.2 | TM35 | M2621NO | 301676 | 4 |

OPTIONS:

- EEx me II explosionproof coils
- NPT ports
- Other versions on request.

Versions with INOX body (1.4404 / AISI 316L)

| Ports | Orifice Size [mm] | Kv (water at 1 bar) [l/min] | Differential pressure [bar] | | Material | | Mass [kg] | Coil type | Model | Order code (click for details) | Fig. |
|-------|-------------------|-----------------------------|-----------------------------|-----|----------|------|-----------|-----------|-------|--------------------------------|------|
| | | | min | max | body | seal | | | | | |
| G3/8 | 8 | 30 | 1 | 250 | INOX | PEEK | 0.65 | TM35 | XBS3N | 316119 | 9 |
| G1/2 | 10 | 33.5 | 2 | 400 | INOX | PEEK | 0.6 | TM35 | B27N | 316634 | 10 |



Open when de-energised (NO)

| Ports | Orifice Size [mm] | Kv (water at 1 bar) [l/min] | Differential pressure [bar] | | Material | | Mass [kg] | Coil type | Model | Order code (click for details) | Fig. |
|-------|-------------------|-----------------------------|-----------------------------|-----|----------|------|-----------|-----------|-------|--------------------------------|------|
| | | | min | max | body | seal | | | | | |
| G1/4 | 5 | 8.6 | 10 | 200 | Brass | PEEK | 0.67 | TM35 | BS2NO | 316071 | 9 |
| G3/8 | 8 | 30 | 0.8 | 80 | Brass | PTFE | 0.43 | TM35 | BS3NO | 316123 | 6 |
| G1/2 | 10 | 42 | 1 | 50 | Brass | PTFE | 0.70 | TM35 | B27NO | 316620 | 7 |
| | 12 | 60 | 1.7 | 120 | Brass | PA | 1.4 | TM35 | BS4NO | 316241 | |
| G3/4 | 18 | 110 | 1.7 | 80 | Brass | PA | 1.4 | TM35 | BS5NO | 316221 | |
| G1 | 25 | 180 | 1 | 18 | Brass | PTFE | 1.25 | TM30 | B26NO | 316411 | 1 |
| | | | 2 | 60 | Brass | PTFE | 1.51 | TM35 | B27NO | 316263 | 3 |
| G6/4 | 40 | 350 | 1 | 18 | Brass | PTFE | 2.2 | TM30 | B26NO | 316421 | 1 |
| | | | 2 | 50 | Brass | PTFE | 3.1 | TM35 | B27NO | 316281 | |
| G2 | 50 | 630 | 1 | 18 | Brass | PTFE | 5.3 | TM30 | B26NO | 316431 | 3 |
| | | | 2 | 35 | Brass | PTFE | 6.5 | TM35 | B27NO | 316300 | |

Versions with INOX body

| Ports | Orifice Size [mm] | Kv (water at 1 bar) [l/min] | Differential pressure [bar] | | Material | | Mass [kg] | Coil type | Model | Order code (click for details) | Fig. |
|-------|-------------------|-----------------------------|-----------------------------|-----|----------|----------|-----------|-----------|--------|--------------------------------|------|
| | | | min | max | body | seal | | | | | |
| G3/8 | 6 | 11 | 0.5 | 70 | INOX | FPM/PEEK | 0.5 | TM35 | BS1NNO | 316061 | 5 |
| | 8 | 30 | 0,8 | 150 | INOX | PEEK | 0.65 | TM35 | BS3NNO | 316157 | 9 |

OPTIONS:

- EEx me II explosionproof coils
- NPT ports
- Other versions on request