

High performance direct acting or pilot-operated valves with brass bodies and PTFE seals, suitable for continuous service with liquid nitrogen (LN<sub>2</sub>), liquid carbon dioxide (LCO<sub>2</sub>) and other cryogenic fluids down to -196°C.

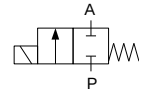


### TECHNICAL DATA:

- **Internal parts:** stainless steel
- **Seals:** PTFE, PAI
- **Fluid temperature:** -196°C to +90°C
- **Ambient temperature:** max +50°C
- **Viscosity:** max 21 mm<sup>2</sup>/s
- **Response time:** 8 - 40 ms (closing)
- **Voltage:** 230, 115, 48, 24 V AC / 24, 12 V DC
- **Duty cycle:** continuous (ED100%)
- **Cycling rate:** 10 to 100 cpm
- **Electrical protection:** IP65 (with plug to ISO 4400)

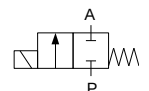
Long term use in humid environment requires the use of sealing sets.

### Closed when de-energised (NC) - Conical seal - Excellent shutoff and durability



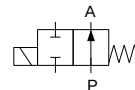
Ports	Orifice Size [mm]	Kv (water at 1 bar) [l/min]	Differential pressure [bar]		Material		Mass [kg]	Coil type	Model	Order code 230 VAC coil	Fig.
			min	max	body	seal					
G1/4	3	3.6	0	30	Brass	PTFE	0.52	TM35	D22c	324916	1
	4.5	7.5	0	9	Brass	PTFE	0.52	TM35	D23c	324914	
G1/2	7	13	0	5	Brass	PTFE	0.52	TM35	D24c	324910	2
	10	28	0	1.5	Brass	PTFE	0.57	TM35	D24c	340459	

### Closed when de-energised (NC) - Disc seal



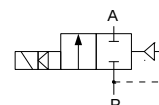
Ports	Orifice Size [mm]	Kv (water at 1 bar) [l/min]	Differential pressure [bar]		Material		Mass [kg]	Coil type	Model	Order code 230 VAC coil	Fig.
			min	max	body	seal					
G1/4	1.4	0.85	0	150	Brass	PTFE	0.52	TM35	D22	324792	1
	3	3.6	0	30	Brass	PTFE	0.52	TM35	D222	320586	
	4.5	7.5	0	10	Brass	PTFE	0.52	TM35	D223	320772	
G1/2	7	13	0	5	Brass	PTFE	0.52	TM35	D224	324774	

### Open when de-energised (NO) - Disc seal



Ports	Orifice Size [mm]	Kv (water at 1 bar) [l/min]	Differential pressure [bar]		Material		Mass [kg]	Coil type	Model	Order code 230 VAC coil	Fig.
			min	max	body	seal					
G1/4	1.4	0.85	0	80	Brass	PTFE	0.52	TM35	D22NO	329420	1
	3	3.6	0	16	Brass	PTFE	0.52	TM35	D22NO	329410	
	4.5	7.5	0	5	Brass	PTFE	0.52	TM35	D22NO	329430	

### Closed when de-energised (NC) - Pilot-operated piston - High flow rate



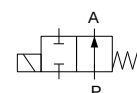
Ports	Orifice Size [mm]	Kv (water at 1 bar) [l/min]	Differential pressure [bar]		Material		Mass [kg]	Coil type	Model	Order code 230 VAC coil	Fig.
			min	max	body	seal					
G3/8	8	30	0.8	200	Brass	PAI	0.65	TM35	XBS3	315464	-
G1/2	10	42	0.5	50	Brass	PTFE	0.75	TM35	B27c	316660	2
			0.3	20	Brass	PTFE	0.75	TM35	B27c	316657	
			0	10	Brass	PTFE	0.75	TM35	B25	316663	
G3/4	18	90	1	20	Brass	PTFE	1.0	TM35	B27c	316687	3
			0	10	Brass	PTFE	1.0	TM35	B25	316661	
G1	25	170	0.35	15	Brass	PTFE	1.51	TM35	B26c	316691	4
G6/4	40	350	0.35	10	Brass	PTFE	3.25	TM35	B26c	316697	
G2	50	630	0.5	10	Brass	PTFE	5.45	TM35	B26c	316699	

**Solenoid valves for cryogenic liquids with extended coil stem for maximum endurance in the harshest environment**



**Closed when de-energised (NC)**

Ports	Orifice Size [mm]	Kv (water at 1 bar) [l/min]	Differential pressure [bar]		Material		Mass [kg]	Coil type	Model	Order code 230 VAC coil	Fig.
			min	max	body	seal					
G1/4	3	3.6	0	30	Brass	PTFE	0.52	TM35	xD22	324899	5
	4.5	7.5	0	9	Brass	PTFE	0.52	TM35	xD22	324896	
G1/2	7	13	0	5	Brass	PTFE	0.52	TM35	xD22	324897	
	10	42	0	1.5	Brass	PTFE	0.52	TM35	xD22	324887	
G1/2	10	42	1	50	Brass	PTFE	0.85	TM35	xB27c	316672	-
			0.3	20	Brass	PTFE	0.85	TM35	xB27c	316668	-
G3/4	18	90	0.35	15	Brass	PTFE	1	TM35	xB27c	316726	-
G1	25	170	0.35	7	Brass	PTFE	1.51	TM35	xB26c	316688	-
G6/4	40	350	0.35	7	Brass	PTFE	3.25	TM35	xB26c	316698	-
G2	50	630	0.5	7	Brass	PTFE	5.45	TM35	xB26c	316701	-



**Open when de-energised (NO)**

Ports	Orifice Size [mm]	Kv (water at 1 bar) [l/min]	Differential pressure [bar]		Material		Mass [kg]	Coil type	Model	Order code	Fig.
			min	max	body	seal					
G1/4	1.4	0.85	0	50	Brass	PTFE	0.52	TM35	xD22	324875	5
	3	3.6	0	20	Brass	PTFE	0.52	TM35	xD22	324879	

**PLEASE CONTACT US FOR OTHER APPLICATIONS!**

**OPTIONS:**

- EEx me II explosionproof coils
- NPT ports
- Other versions on request