

PRESSURE DIFFERENCE REQUIRED FOR VALVE OPERATION

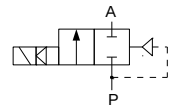


TECHNICAL DATA:

- **Body:** brass, stainless steel
- **Internal parts:** stainless steel
- **Seals:** PA, PTFE
- **Fluid temperature:** -10°C to +100°C (PTFE); +90°C (PA)
- **Ambient temperature:** max +55°C
- **Viscosity:** max 21 mm²/s
- **Response time:** 0.1 – 1 s
- **Voltage:** 230, 115, 48, 24 V AC; 24, 12 V DC
- **Duty cycle:** continuous (ED100%)
- **Cycling rate:** 10 - 100 cpm
- **Electrical protection:** IP65 (with plug to ISO 4400)

Long term use in humid environment requires the use of sealing sets.

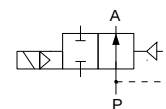
Closed when de-energised (NC)



Ports	Orifice Size [mm]	Kv (water at 1 bar) [l/min]	Differential pressure [bar]		Material		Mass [kg]	Coil type	Model	Order code (click for details)	Fig.	
			min	max	body	seal						
G1/4	6	11	0.5	35	Brass	PEEK	0.5	TM35	BS1	316054	5	
				100	Brass	PEEK	0.5	TM35	XBS1	316075		
G1/4	5	8.6	10	200	Brass	PEEK	0.67	TM35	BS2	316078	9	
				100	Brass	PEEK	0.65	TM35	BS3	316148	6	
G3/8	8	30	0.8	200	Brass	PEEK	0.65	TM35	XBS3	316159		
				0.3	50	Brass	PTFE	0.43	TM30	B27	316600	2
G1/2	10	42	1	80	Brass	PTFE	0.5	TM35	B27S	316599		
			33.5	1	250	Brass	PTFE	0.5	TM35	XB27	316096	10
			1.7	120	Brass	PA	1.4	TM35	BS4	316240	7	
G3/4	18	90	1	60	Brass	PTFE	0.98	TM35	B27	316752	8	
				1.7	80	Brass	PA	1.4	TM35	BS5	316230	7
G1	25	180	1	18	Brass	PTFE	1.25	TM30	B26	316401	1	
				2	60	Brass	PTFE	1.51	TM35	B27	316261	3
					100	Brass	PTFE	1.51	TM35	XB27	316274	
G6/4	40	350	1	18	Brass	PTFE	2.2	TM30	B26	316451	1	
				2	60	Brass	PTFE	3.1	TM35	B27	316271	3
G2	50	630	1	18	Brass	PTFE	5.3	TM30	B26	316481		
				2	35	Brass	PTFE	6.5	TM35	B27	316291	

Versions with INOX body (1.4404 / AISI 316L)

Ports	Orifice Size [mm]	Kv (water at 1 bar) [l/min]	Differential pressure [bar]		Material		Mass [kg]	Coil type	Model	Order code (click for details)	Fig.
			min	max	body	seal					
G3/8	8	30	1	250	INOX	PEEK	0.65	TM35	XBS3N	316119	9
G1/2	10	33.5	2	400	INOX	PEEK	0.6	TM35	B27N	316634	10



Open when de-energised (NO)

Ports	Orifice Size [mm]	Kv (water at 1 bar) [l/min]	Differential pressure [bar]		Material		Mass [kg]	Coil type	Model	Order code (click for details)	Fig.
			min	max	body	seal					
G1/4	5	8.6	10	200	Brass	PEEK	0.67	TM35	BS2NO	316071	9
G3/8	8	30	0.8	80	Brass	PTFE	0.43	TM35	BS3NO	316123	6
G1/2	10	42	1	50	Brass	PTFE	0.70	TM35	B27NO	316620	7
	12	60	1.7	120	Brass	PA	1.4	TM35	BS4NO	316241	
G3/4	18	110	1.7	80	Brass	PA	1.4	TM35	BS5NO	316221	
G1	25	180	1	18	Brass	PTFE	1.25	TM30	B26NO	316411	1
			2	60	Brass	PTFE	1.51	TM35	B27NO	316263	3
G6/4	40	350	1	18	Brass	PTFE	2.2	TM30	B26NO	316421	1
			2	50	Brass	PTFE	3.1	TM35	B27NO	316281	3
G2	50	630	1	18	Brass	PTFE	5.3	TM30	B26NO	316431	
			2	35	Brass	PTFE	6.5	TM35	B27NO	316300	

Versions with INOX body

Ports	Orifice Size [mm]	Kv (water at 1 bar) [l/min]	Differential pressure [bar]		Material		Mass [kg]	Coil type	Model	Order code (click for details)	Fig.
			min	max	body	seal					
G3/8	6	11	0.5	70	INOX	FPM/PEEK	0.5	TM35	BS1NNO	316061	5
	8	30	0,8	150	INOX	PEEK	0.65	TM35	BS3NNO	316157	9

OPTIONS:

- EEx me II explosionproof coils
- NPT ports
- Other versions on request