

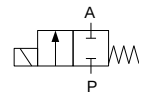


TECHNICAL DATA:

- **Internal parts:** none in contact with fluid
- **Seals:** NBR, EPDM, FPM, PTFE
- **Fluids:** corrosive liquids
- **Fluid temperature:** -10°C to +75°C
- **Ambient temperature:** max +55°C
- **Viscosity:** max 21 mm²/s
- **Response times:** 10-20 ms
- **Voltage:** 230, 115, 48, 24 V AC; 24, 12 V DC
- **Duty cycle:** continuous (ED100%)
- **Cycling rate:** 10 - 100 cpm
- **Electrical protection:** IP65
(with plug to ISO 6952 / ISO 4400)

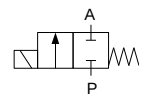
Long term use in humid environment requires the use of sealing sets.

Closed when de-energised (NC)



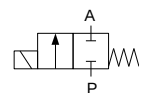
Ports	Orifice Size [mm]	Kv (water at 1 bar) [l/min]	Differential pressure [bar]		Material		Mass [kg]	Coil type	Model	Order code (click for details)	Fig.
			min	max	body	seal					
G3/8	4	5.9	0	0.4	PA	EPDM	0.12	TM25	DL4PA	339099	1
	6	14	0	0.4	PP	FPM	0.27	TM30	DL6	339004	2
	6	12	0	2	PP	FPM	0.38	TM35	DL6	339042	
	6	12	0	3	PP	EPDM	0.45	TM35	DL10	339878	3
	11	38	0	0.15	PP	FPM	0.27	TM30	DL11	339025	2
	11	38	0	0.6	PP	FPM	0.38	TM35	DL11	339026	
G1/2	10	15	0	1	PP	EPDM	0.47	TM35	D249	312710	4
	10	20	0	1.8	PP	EPDM	0.45	TM35	DL10	339830	3
						FPM	0.45	TM35	DL10	339820	
G3/4	18	70	0	0.1	PA	EPDM	0.47	TM35	DL18	339781	5

Closed when de-energised (NC) - Miniature PTFE body



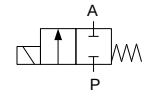
Ports	Orifice Size [mm]	Kv (water at 1 bar) [l/min]	Differential pressure [bar]		Material		Mass [kg]	Coil type	Model	Order code (click for details)	Fig.
			min	max	body	seal					
Ø4.5	2	0.22	0	0.2	PTFE	EPDM	0.12	TM25	DL2T	339104	-

Closed when de-energised (NC) – All wetted parts made of PTFE



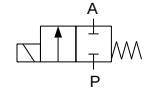
Ports	Orifice Size [mm]	Kv (water at 1 bar) [l/min]	Differential pressure [bar]		Material		Mass [kg]	Coil type	Model	Order code (click for details)	Fig.
			min	max	body	seal					
G1/4	4	5.4	0	1.5	PTFE	PTFE	0.54	TM35	DL4T	339091	-

Pinch valves (NC)



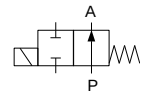
Body \varnothing [mm]	Tube \varnothing [mm]		Pinching force [N]	Mass [kg]	Coil type	Voltage	Power [W]	Valve type	Order code (click for details)
	inner	outer							
25	3	5	4	0.22	TM35	24 V DC	12	DLC3	300507
30	6	9	14	0.42	TM35	24 V DC	18	DLC6	300506

Pinch valves for vacuum (NC)



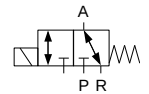
Body \varnothing [mm]	Tube \varnothing [mm]		Pinching force [N]	Mass [kg]	Coil type	Voltage	Power [W]	Valve type	Order code (click for details)
	inner	outer							
30	6	10	19	0.42	TM35	24 V DC	18	XDLC6	300503

Open when de-energised (NO)



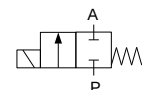
Ports	Orifice Size [mm]	Kv (water at 1 bar) [l/min]	Differential pressure [bar]		Material		Mass [kg]	Coil type	Model	Order code (click for details)	Fig.
			min	max	body	seal					
G3/8	6	14	0	0.4	PP	FPM	0.43	TM35	DL6NO	339688	2
	11	38	0	0.15	PP	FPM	0.43	TM35	DL11NO	339695	
G1/2	10	20	0	1.4	PP	EPDM	0.45	TM35	DL10NO	339840	3
G3/4	18	70	0	0.1	PA	EPDM	0.47	TM35	DL18NO	339810	5

3/2 Diverter (NC/NO)



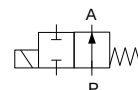
Ports	Orifice Size [mm]	Kv (water at 1 bar) [l/min]	Differential pressure [bar]		Material		Mass [kg]	Coil type	Model	Order code (click for details)	Fig.
			min	max	body	seal					
G3/8	6	16	0	3	PP	EPDM	0.45	TM35	DL10R	339870	6
G1/2	10	20	0	0.5	PP	EPDM	0.45	TM35	DL10R	339850	

Closed when de-energised (NC) - High pressure - INOX body



Ports	Orifice Size [mm]	Kv (water at 1 bar) [l/min]	Differential pressure [bar]		Material		Mass [kg]	Coil type	Model	Order code (click for details)
			min	max	body	seal				
G1/4	2	2	0	15	INOX	EPDM	0.35	TM30	XDL2N	339112

Air operated, open when de-energised (NO)



Ports	Orifice Size [mm]	Kv (water at 1 bar) [l/min]	Differential pressure [bar]		Material		Mass [kg]	Model	Order code (click for details)
			min	max	body	seal			
G3/4	18	70	0	6	PA	EPDM	0.35	DL18NOpa	339762

PLEASE CONTACT US FOR OTHER APPLICATIONS!

OPTIONS:

- EEx me II explosionproof coils
- NPT ports
- Other versions on request