

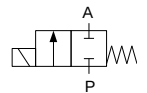


TECHNICAL DATA:

- **Internal parts:** stainless steel
- **Seals:** NBR, EPDM, FPM, PTFE
- **Fluid temperature:**
-10°C to +90°C (NBR);
+130°C (EPDM, FPM, PTFE)
- **Ambient temperature:** max +55°C
- **Viscosity:** max 21 mm²/s
- **Response time:** 10 - 20 ms
- **Voltage:** 230, 115, 48, 24 V AC / 24, 12 V DC
- **Duty cycle:** continuous (ED100%)
- **Cycling rate:** max 1000 cycles/min
- **Electrical protection:** IP65
(with plug to ISO 6952 / ISO 4400)

Long term use in humid environment requires the use of sealing sets.

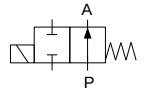
Closed when de-energised (NC)



Ports	Orifice Size [mm]	Kv (water at 1 bar) [l/min]	Differential pressure [bar]		Body	Mass [kg]	Coil type	Model	Order code 230 VAC coil	Fig.
			min	max						
G1/8	1.2	0.75	0	35	Brass	0.14	TM25	D210	320611	1
	1.5	0.85	0	20	Brass	0.14	TM25	D210	320615	
	2	1.8	0	12	Brass*	0.14	TM25	D211	320608	
	3	3.2	0	10	Brass	0.14	TM25	D211	324602	
G1/4	4	4.5	0	0.5	Brass	0.14	TM25	D211	324604	
G1/8	1.4	0.85	0	75	Brass	0.35	TM30	D220	320513	3
	2	1.8	0	35	Brass	0.35	TM30	D221	320201	
	3	3.6	0	10	Brass*	0.35	TM30	D222	320209	
G1/4	1	0.3	0	120	Brass	0.52	TM35	D220	320712	
	1.2	0.75	0	150	Brass*	0.52	TM35	D220	320701	
	1.4	0.85	0	75	Brass	0.52	TM35	D220	320510	
	2	1.8	0	80	Brass*	0.52	TM35	D221	320706	
	3	3.6	0	10	Brass	0.35	TM30	D222	320229	
	3	3.6	0	25	Brass	0.52	TM35	D222	320718	
	4.5	7.5	0	8	Brass*	0.35	TM30	D223	320237	
	4.5	7.5	0	20	Brass*	0.52	TM35	D223	320714	
6	11	0	7	Brass	0.52	TM35	D224	324710		
G3/8	7	13	0	3	INOX	0.52	TM35	D224N	320803	
G3/8	4	7.2	0	8	PA	0.25	TM30	D223PA	320598	6
G3/8	7	13	0	7	Brass	0.52	TM35	D224	320717	3
G1/2	7	13	0	7	Brass*	0.52	TM35	D224	320780	
G1/2	10	25	0	1.2	Brass*	0.42	TM30	D240	340499	4
	10	25	0	2	Brass	0.57	TM35	D240	340481	
6 mm	2.2	1.8	0	10	Brass	0.15	TM25	D201	320610	2

*INOX body available

Open when de-energised (NO)



Ports	Orifice Size [mm]	Kv (water at 1 bar) [l/min]	Differential pressure [bar]		Body	Mass [kg]	Coil type	Model	Order code 230 VAC coil	Fig.
			min	max						
G1/8	1.5	0.85	0	10	Brass	0.14	TM25	D21NO	329612	1
G1/8	2	1.8	0	12	Brass	0.25	TM30	XD2NO	320010	5
G1/8	2	1.8	0	15	Brass	0.35	TM30	D22NO	329501	3
G1/4	1	0.3	0	80	Brass	0.35	TM35	D22NO	329709	
	1.2	0.85	0	35	Brass	0.52	TM35	D22NO	329712	
	2	1.8	0	16	Brass	0.35	TM30	D22NO	329505	
	3	3.6	0	10	Brass	0.52	TM35	D22NO	329705	
	4.5	7.5	0	6	Brass	0.35	TM30	D22NO	329509	
G3/8	6	8	0	6	Brass	0.57	TM35	D22NO	329793	
G1/2	10	25	0	1	Brass	0.57	TM35	D240NO	340442	4

OPTIONS:

- EEx me II explosionproof coils
- INOX body
- NPT ports
- Other versions on request