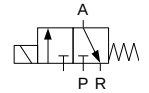


TECHNICAL DATA:

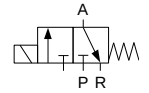
- **Internal parts:** stainless steel
 - **Seals:** NBR, EPDM, FPM
 - **Fluid temperature:** -10°C to +90°C (NBR);
+130°C (EPDM, FPM)
 - **Ambient temperature:** ≤ 55°C
 - **Viscosity:** ≤ 21 mm²/s
 - **Response time:** 10 – 60 ms
 - **Voltage:** 230, 115, 48, 24 V AC
24, 12 V DC
 - **Duty cycle:** continuous (ED100%)
 - **Electrical protection:** IP65
(with plug to ISO 6952 / ISO 4400)
- Long term use in humid environment requires
The use of sealing sets
- **Optional:**
 - EEx me II explosionproof coils
 - INOX body
 - NPT ports



GENERAL PURPOSE SOLENOID VALVES - Closed when de-energised (NC)

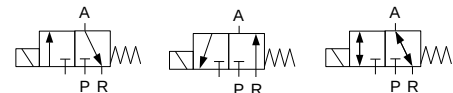
| Ports | Orifice Size [mm] | Kv (water at 1 bar) [l/min] | Differential pressure [bar] | | Body | Mass [kg] | Coil type | Model | Order code 230 VAC coil | Fig. |
|--------|-------------------|-----------------------------|-----------------------------|-----|-------|-----------|-----------|-------|-------------------------|------|
| | | | min | max | | | | | | |
| G1/8 | 1 | 0.5 | 0 | 10 | Brass | 0.15 | TM25 | D305 | 330611 | 1 |
| | 1.2 | 0.75 | 0 | 10 | Brass | 0.15 | TM25 | D305 | 330614 | |
| | 1.5 | 0.95 | 0 | 7 | Brass | 0.15 | TM25 | D305 | 330616 | |
| FL22 | 1 | 0.5 | 0 | 10 | Brass | 0.15 | TM25 | D305 | 330618 | 2 |
| G1/8 | 1.8 | 1.5 | 0 | 10 | Brass | 0.35 | TM30 | D310 | 330513 | 3 |
| G1/4 | 1.4 | 0.85 | 0 | 16 | Brass | 0.35 | TM30 | D320 | 330510 | |
| | 1.8 | 1.5 | 0 | 10 | Brass | 0.35 | TM30 | D321 | 330511 | |
| | 2.3 | 1.9 | 0 | 15 | Brass | 0.52 | TM35 | D384 | 330710 | |
| FL32 | 1.5 | 0.95 | 0 | 12 | Brass | 0.23 | TM30 | D381 | 330518 | 4 |
| | 1.5 | 0.95 | 0 | 12 | Brass | 0.35 | TM30 | D383 | 330514 | |
| 2xG1/8 | 1.8 | 1.5 | 0 | 10 | Brass | 0.45 | TM30 | D500 | 330480 | 5 |
| 3xG1/8 | 1.8 | 1.5 | 0 | 10 | Brass | 0.68 | TM30 | D500 | 330486 | |
| 4xG1/8 | 1.8 | 1.5 | 0 | 10 | Brass | 0.90 | TM30 | D500 | 330487 | |
| 5xG1/8 | 1.8 | 1.5 | 0 | 10 | Brass | 1.13 | TM30 | D500 | 330488 | |

HIGH FLOW CAPACITY SOLENOID VALVES - Closed when de-energised (NC)



| Ports | Orifice Size [mm] | Kv (water at 1 bar) [l/min] | Differential pressure [bar] | | Body | Mass [kg] | Coil type | Model | Order code 230 VAC coil | Fig. |
|-------|-------------------|-----------------------------|-----------------------------|-----|-------|-----------|-----------|-------|-------------------------|------|
| | | | min | max | | | | | | |
| G3/8 | 13 | 28 | 0 | 2 | Brass | 0.79 | TM35 | D329 | 331762 | 6 |
| G3/8 | 13 | 28 | 0 | 0.3 | Brass | 0.79 | TM35 | D329 | 331763 | |
| G1/2 | 17 | 60 | 0 | 1 | Brass | 0.79 | TM35 | D329 | 331773 | 6 |
| G3/4 | 22 | 105 | 0 | 0.2 | Brass | 1.75 | TM40 | D327 | 331748 | 6 |
| | 22 | 105 | 0 | 2 | Brass | 1.75 | TM40 | XD327 | 331750 | |

3-PORT BODY SOLENOID VALVES – NC/NO/Diverter



| Ports | Orifice Size [mm] | Function | Differential pressure [bar] | | Model | Order code 230 VAC coil | Fig. |
|-------|-------------------|----------------|-----------------------------|-----|--------|-------------------------|------|
| | | | min | max | | | |
| G3/8 | 1.8 - 3.0 | NC/NO/Diverter | 0 | 16 | D33 | 331130 | 7 |
| G3/8 | 1.0 – 4.0 | NC | 0 | 100 | XD33 | 331763 | |
| G3/8 | 1.0 – 4.0 | NO | 0 | 70 | XD33NO | 331117 | |