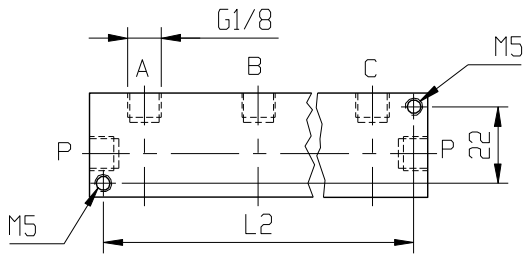


Ports	Orifice size [mm]	Kv [l/min] water (p = 1 bar)	Differential pressure [bar]		Material		Mass [kg]	Coil type	Model	Voltage	Power [W]	Order code
			min	max	body	seal						
2xG1/8	1.8	1.5	0	10	Brass	NBR	0.45	TM30	D500	230 V AC	10	330480
										115 V AC	10	330481
										48 V AC	10	330482
										24 V AC	10	330483
										24 V DC	10	330484
3xG1/8	1.8	1.5	0	10	Brass	NBR	0.68	TM30	D500	230 V AC	10	330486
4xG1/8	1.8	1.5	0	10	Brass	NBR	0.9	TM30	D500	230 V AC	10	330487
5xG1/8	1.8	1.5	0	10	Brass	NBR	1.13	TM30	D500	230 V AC	10	330488



No. of outlets	L1	L2
2	65	57
3	98	90
4	131	123
5	164	165

