

Ports (ISO 228)	Orifice size [mm]	Kv (water at 1 bar) [l/min]	Differential pressure [bar]		Valve body	Seal	Mass [kg]	Coil type	Model	Order code 230VAC coil	Fig.
			Min	Max AC*							

Drain valves, closed when de-energised (NC)

G1/4	4.5	7.5	0	15	Brass	FPM	0.35	TM30	D4K	321502	1
G3/8	4.5	7.5	0	15	Brass	FPM	0.35	TM30	D4K	321503	1
G1/2	4.5	7.5	0	15	Brass	FPM	0.35	TM30	D4K	321505	1

Air release valves, open when de-energised (NO)

G1/2	10	20	0	12	Brass	FPM	0.43	TM30	M34NO	349514	2
	10	20	1	20	Brass	PA	0.5	TM30	B24NO	316322	3
	10	20	1	50	Brass	PA	0.6	TM35	B27NO	316312	3
G1	25	180	1	20	Brass	PTFE	1.66	TM35	B26NO	316350	4
G6/4	40	350	1	20	Brass	PTFE	3.25	TM35	B26NO	316362	4
G2	50	630	1	20	Brass	PTFE	5.45	TM35	B26NO	316374	4

Valves for air dryers, closed when de-energised (NC)

G1	25	180	1	20	Brass	PTFE	1.66	TM35	B26	316502	5
G6/4	40	350	1	20	Brass	PTFE	3.25	TM35	B26	316522	5
G2	50	630	1	20	Brass	PTFE	5.45	TM35	B26	316542	5

Oil stop valves, closed when de-energised (NC)

G1	25	180	1	18	Brass	PTFE	1.66	TM30	B26	316401	5
G6/4	40	350	1	18	Brass	PTFE	3.25	TM30	B26	316451	5
G2	50	630	1	18	Brass	PTFE	5.45	TM30	B26	316481	5

*Pressure is lower when DC coil is used!

ORDERING:

Please state order code and voltage (e.g.: 321502 24VAC) or consult our staff.
For easier valve choice use QUESTIONNAIRE on page 40.

OPTIONS:

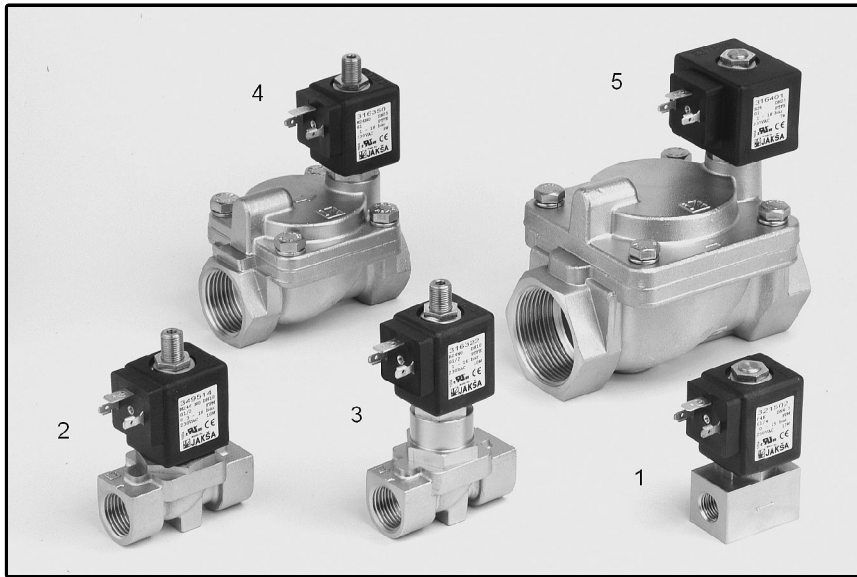
- EEx me II explosionproof coils
- NPT ports

Other versions on request.

Specifications are subject to change without notice.

TECHNICAL DATA:

Internal parts: stainless steel
 Seals: FPM, PA, PTFE
 Fluid temperature: -10°C to +110°C
 Ambient temperature: max +55°C
 Viscosity: max 21 mm²/s
 Response time: closing 10 – 20 ms
 Voltages: 230, 115, 48, 24 V 50/60 Hz
 24, 12 V DC
 Power consumption: see chapter »Coils«
 Duty cycle: continuous (ED100%)
 Cycling rate: 10 – 100 cpm
 IP rating: IP65 (with plug to DIN 43650)



Dimensions [mm]:

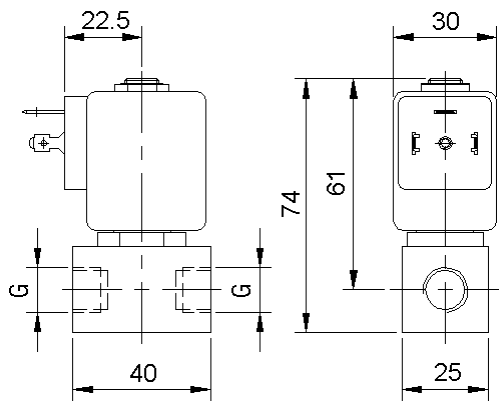


Fig. 1

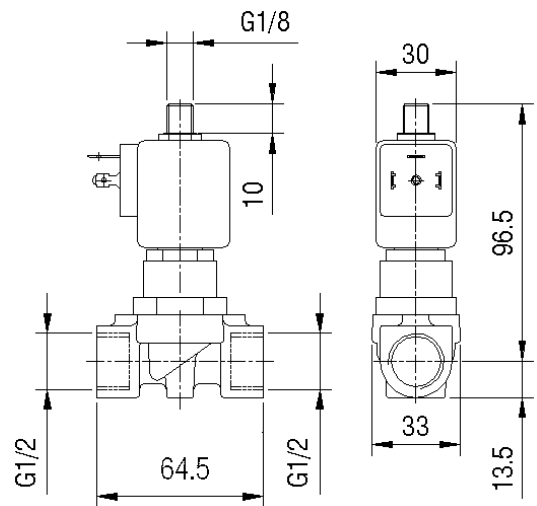


Fig. 3

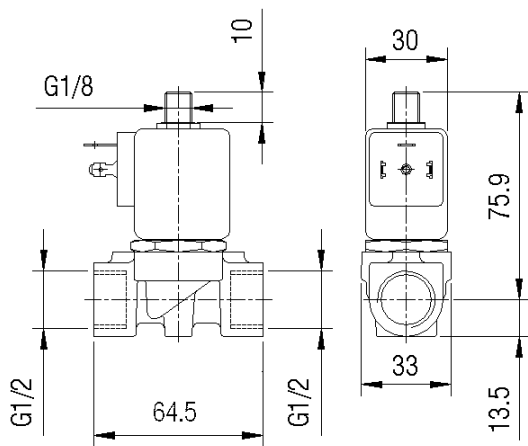


Fig. 2

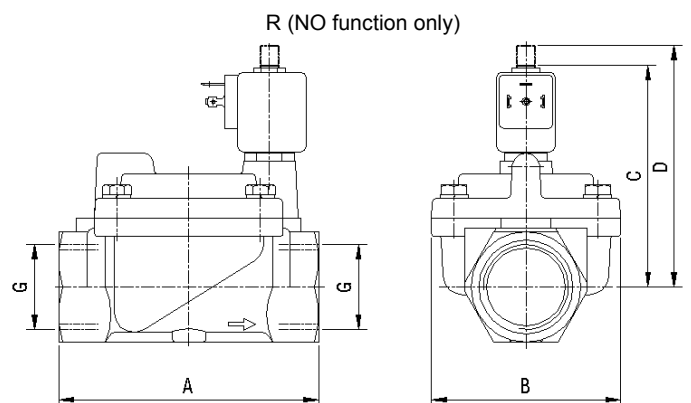


Fig. 4 + 5

G	A	B	C	D
1"	95	70	97	107
6/4"	132	96	113	123
2"	160	112	129	139