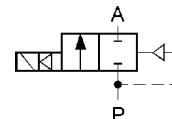


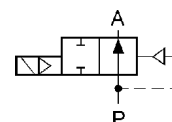
Closed when de-energised (NC)

Ports (ISO 228)	Orifice size [mm]	Kv (water at 1 bar) [l/min]	Differential pressure [bar]		Valve body	Mass [kg]	Coil type	Model	Order code 230VAC NBR seal	Fig.
			Min	Max AC*						
G1/2	10	20	0.3	10	Brass	0.34	TM25	M2401	341600	1
	10	20	0.3	12	Brass	0.42	TM30	M24K	340506	2
	10	20	0.3	12	INOX	0.42	TM30	M24KN	386210	3
G3/8	10	20	0.3	12	Brass	0.43	TM30	M24K	341505	2
G3/4-Ø20	18	90	0.3	10	PA	0.46	TM25	M255c	352612	4
G3/4	18	90	0.3	10	PA	0.46	TM25	M255	352611	4
	18	90	0.3	10	Brass/PA	0.46	TM25	M254	350619	5
	18	90	0.3	12	Brass	0.57	TM25	M251	350613	5
	18	90	0.3	16	Brass	0.66	TM30	M250	350510	5
G1	25	180	0.3	12	Brass	1.1	TM25	M261	360613	6
	25	180	0.3	12	Brass	1.2	TM30	M260	360518	6
	25	180	0.3	16	Brass	1.2	TM30	M260	360513	6
G6/4	40	350	0.3	12	Brass	2.3	TM25	M271	370610	7
	40	350	0.3	12	Brass	2.4	TM30	M270	370511	7
	40	350	0.3	16	Brass	2.4	TM30	M270	370512	7
	40	350	0.3	16	Brass	2.5	TM30	M270R**	370510	7
G2	50	630	0.5	16	Brass	4.5	TM30	M286	390510	8



Open when de-energised (NO)

G1/2	10	20	0.3	10	Brass	0.34	TM25	M24NO	349600	1
	10	20	0.3	12	Brass	0.42	TM30	M24KNO	349516	2
G3/8	10	20	0.3	12	Brass	0.42	TM30	M24KNO	349518	2
G3/4	18	90	0.3	12	Brass	0.66	TM30	M250NO	359511	5
G1	25	180	0.3	16	Brass	1.2	TM30	M260NO	369512	6
G6/4	40	350	0.3	16	Brass	2.4	TM30	M270NO	379512	7
G2	50	630	0.5	16	Brass	4.5	TM30	M286NO	391510	8



*Pressure is lower when DC coil is used!

**With adjustable shut-off speed

ORDERING:

Please state order code, seal material and voltage (e.g.: 341600 EPDM 24VAC) or consult our staff.
For easier valve choice use QUESTIONNAIRE on page 40.

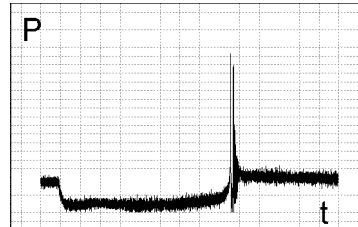
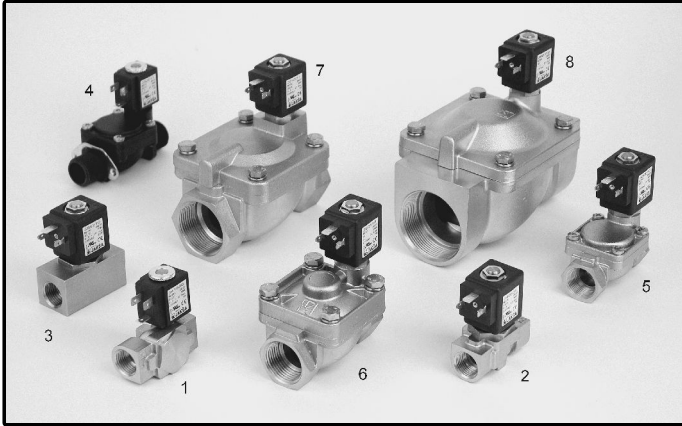
OPTIONS:

- EEx me II explosionproof coil
- stainless steel valve body
- NPT ports

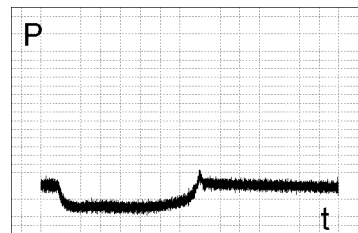
Other versions on request. Specifications are subject to change without notice.

TECHNICAL DATA:

Internal parts: stainless steel
 Seals: NBR, EPDM, FPM
 Fluid temperature: -10°C to +85°C (NBR)
 -10°C to +100°C (FPM)
 max +130°C (EPDM)
 Ambient temperature: max +55°C
 Viscosity: max 21 mm²/s
 Response time: opening 0.05 – 1 s / closing 0.5 – 4 s
 Voltages: 230, 115, 48, 24 V 50/60 Hz
 24, 12 V DC
 Power consumption: See chapter »Coils«
 Duty cycle: continuous (ED100%)
 Cycling rate: 10 – 100 cpm
 IP rating: IP65 (with plug to DIN 43650)



Ordinary diaphragm valve shut-off diagram – **EXCESSIVE WATERHAMMER**



JAKŠA diaphragm valve shut-off diagram – **NO WATERHAMMER**

Dimensions [mm]:

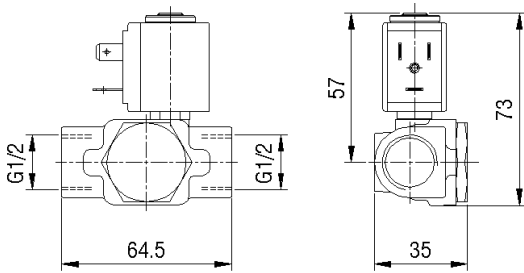


Fig. 1

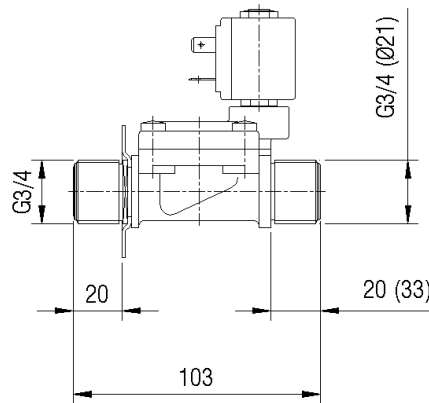


Fig. 4

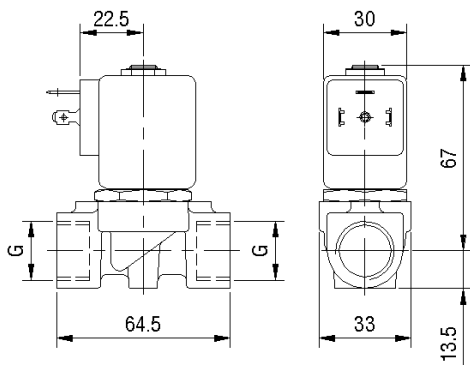
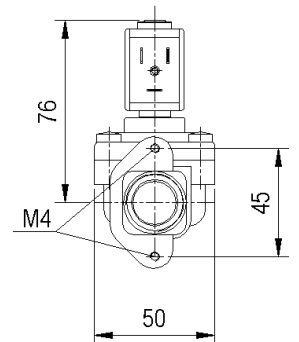


Fig. 2 + 3

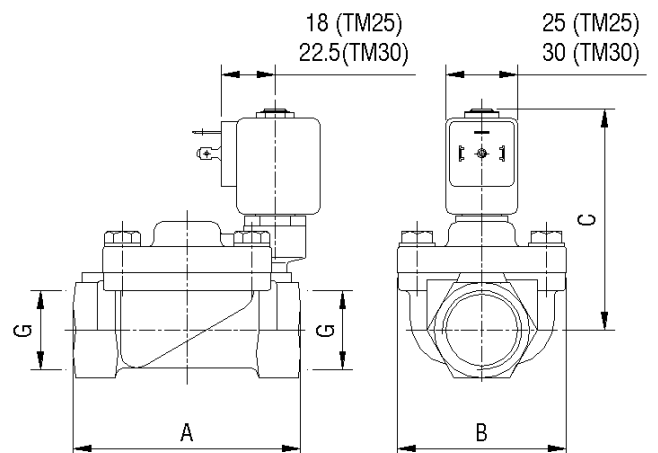


Fig.	A	B	C (TM25/TM30/NO)
5	78	50	78 / 86 / 98
6	95	70	84 / 92 / 102
7	132	96	103 / 111 / 121
8	160	112	120 / 130